



Bulldog Bytes

Beaver Lake Middle School PTSA 2.6.33 www.blmsptsa.ourschoolpages.com October 2018
25025 SE 32nd St. Issaquah WA 98029 president@beaverlakeptsa.org Volume 13, Issue 2

Dear Families,

It's hard to believe we've almost made it through the first month of school — we hope the transition from summer vacation to school schedules and homework has been a smooth process for all!

Your PTSA is off and running and planning our fall events with much of the help coming from many of you!! Already this year, we've called upon volunteers to help with many programs including Bulldog Business Day, Back to School Lunch for the teachers and staff, First Day of School Schedule Handouts and so much more. Thank you to all our volunteers!

To help keep these and many other programs going within the school, we continue to promote and ask our Bulldog families to support our "Pass the Hat" fundraiser. Our "Pass the Hat" fundraiser is the PTSA's only fundraiser and separate from the ASB Popcorn & Cookie Dough fundraiser that was recently launched. While the ASB fundraiser will help pay for student-focused activities including after school clubs, sports, and assemblies, the PTSA is focused not only on student events such as Trivia and BINGO nights, but also on needs within our kids' classrooms that are not otherwise funded by the district or state through our Bucks for Bulldogs grant program.

If you haven't already, please consider donating to this cause by visiting our website: <http://www.beaverlakeptsa.org>. We are currently in the process of accepting Bucks for Bulldogs grant applications from teachers and staff for programs/items that are not otherwise funded. Thanks to generous donations from our BLMS parents, many teachers have taken advantage of this great program. Over the past few years, well over \$75,000 in grants have been given to BLMS from the PTSA – a very significant impact for our students and our entire BLMS community!

To hear more about what the PTSA has planned for this year and to learn how you can get involved, please join us at our General Membership Meetings held throughout the year. The first meeting is set for Tuesday, October 2nd at 9:30am in the BLMS Library. In addition to PTSA news, you'll have an opportunity to hear what's happening in our school from our principal, Stacy Cho. We will vary the GM meeting times during the year with both morning and evening events. By doing so, we hope you can join us for the ones that fit your schedule.

Thank you for your support!
Kindest regards,
Krystl McCandlish and Mary Jo Webb
PTSA Co-Presidents

"Like" us on Facebook at Beaver Lake Middle School PTSA and find us at our website...

<http://blmsptsa.ourschoolpages.com/Home>



PTSA Co-Presidents
Krystl McCandlish
Mary Jo Webb
president@beaverlakeptsa.org

Treasurer
Noelle Alvis
treasurer@beaverlakeptsa.org

Secretary
Stefanie Magnuson
secretary@beaverlakeptsa.org

VP Membership
Nicole Brenner
Jaime Foreman
membership@beaverlakeptsa.org

VP Volunteers
Tara Farhad
volunteers@beaverlakeptsa.org

Reflections Chair
Tanu Varshney
tanu.mtr@gmail.com

ISF Ambassador
Meredith Spencer
Merb99@outlook.com

Communications
Andrea Piotraszewski
apiotras@gmail.com





SEND STUDENT VIDEOS & PICS

This year we would like to share pictures or short (30 seconds or less) videos of our students doing those things they enjoy outside of school. We'd love to see them engaged in their hobbies, community service projects, athletics, recitals, etc. These will be placed in the morning and lunchtime presentations we share with our students daily.

Please send us electronic copies of your photos or short (30 seconds or less) videos of your students engaged in these activities. Send to: helgesonl@issaquah.wednet.edu.



ATTENTION PARENTS!!!

This year, 6th and 8th graders will be asked to complete the Healthy Youth Survey on October 10th. This survey asks questions of students regarding risk factors for injury, health outcomes, and drug and alcohol abuse. Schools, communities, and state and local health departments use survey results to support our youth and reduce their risks. The Healthy Youth Survey is voluntary and anonymous.

We sent home information regarding the survey on September 19th with your student. Please review the information and contact Lane Helgeson helgesonl@issaquah.wednet.edu if you have any questions.



- **Tues., 10/2, 9:30am:** PTSA General Membership meeting in the BLMS Library
- **Fri., 10/5:** *ASB Fundraiser, Turn-In Day #2*
- **Mon., 10/8:** Teacher Work Day, No School
- **Mon., 10/15, 2:45-3:30pm:** Site Council Meeting
- **Weds., 10/17:** Mid-Tri



FAMILY TRIVIA NIGHT

Last year, we held our first ever Family Trivia Night and it was **So. Much. Fun.**

We are looking for volunteers to help with this great family event this year - Friday, Nov. 16th.

Don't worry if you haven't volunteered before. there will be lots of guidance from people that worked on this event last year.

Email volunteers@beaverlakeptsa.org to sign up or get more information.



I'm Nicole Perriella-Rehmke (pronounced Per-ella-Rem-key), and I'm the PBSES Coach here at Beaver Lake Middle School.

I am passionate about supporting students and teachers succeed at school. This year, we are implementing our new Social Emotional Learning curriculum called *Second Step*. By developing positive social and emotional skills, all students are able to learn and thrive. Access a fabulous parent resource called [ParentTeen Connect by clicking here](#). After teaching for 12 years, I am thrilled to be part of the leadership team at Beaver Lake.

To learn more about PBSES, visit the district website by [clicking here](#).



COLLEGE SUMMIT + AUDITION WORKSHOP - SATURDAY, OCT 27

Professional musicians, and music conservatory graduates, Riley Mulherkar and Willem de Koch will demystify the **college audition experience** for you. **Learn how to set yourself apart** from the competition, prepare for recorded and live auditions, and select the school that's right for you. **Parents welcome!** Grades 9-12, all instruments and voice. Sliding scale fee. More information, **including list of confirmed colleges** and state universities attending at <https://www.seattlejazzed.org/college-summit/>

JAZZED ENSEMBLES PLACEMENT – SAT, NOV 17 & SUN, NOV 18

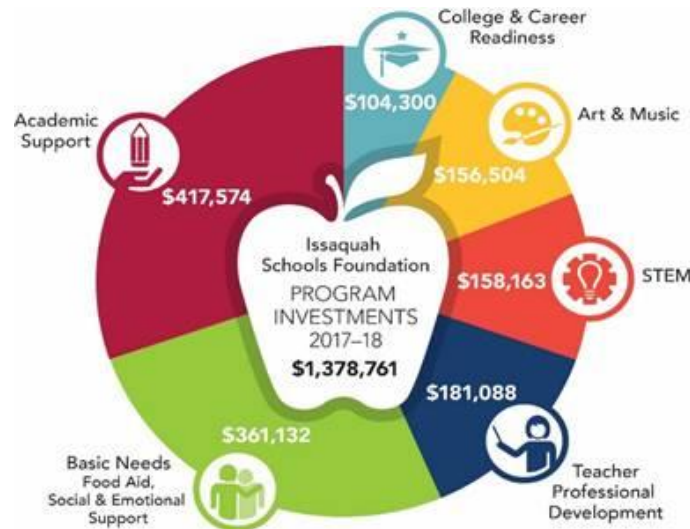
Play and perform under legendary local educators like Clarence Acox, Wayne Horvitz, Darin Faul and many more, alongside dedicated students from Seattle and beyond. Although most of our instrumental ensembles are **traditional jazz big bands**, we are proud to offer opportunities to students on **string instruments** in the [New Works Ensemble](#) and [Creative Orchestra Project](#). Ensembles rehearse on the weekend, January through May 2019, with multiple performances. Sliding scale tuition means every family can pay at the level that works for them. **Grades 5-12, with one year of instrumental experience** can register for Ensembles Placement (Nov 17 or Nov 18) and get more information at <https://www.seattlejazzed.org/ensembles/> or call 206-324-JAZZ (5299).

NINA SIMONE VOCAL ENSEMBLE PLACEMENTS - SATURDAY, NOV 17

Let your voice soar! As Nina Simone was known to do, we bring together a broad range of styles, but are always steeped in gospel and folk traditions. Performing numerous original songs by director Cora Jackson, **this soulful group uses harmony to explore American roots music**. Ensemble rehearses Saturday afternoons, January through May 2019, with multiple performances. Sliding scale tuition means every family can pay at the level that works for them. **Grades 7-12, boys and girls**, can register for the Vocal Ensemble Placement and get more information at <https://www.seattlejazzed.org/vocal-ensemble/> or call 206-324-JAZZ (5299).

October 2018

Thanks to the hard work of Board and Staff, and the generosity of our community during the 2017-18 school year, the Foundation distributed \$1,378,761 to 69 unique programs. Here's just a snapshot of what we accomplished together:



October Happenings

All in for Kids

The Foundation's annual **All in for Kids** campaign is in full swing. If you missed donating during the online back to school process, there is still time to support our students! Please donate at <http://isfdn.org>.

Dining for Kids

Dining for Kids night returns on Wednesday, **October 3rd** at the RAM in the Issaquah Highlands. This Dining for Kids event will be dinner only. They are adding some fun to the evening though and are including a magician! So, skip cooking that evening and join your friends at the RAM for dinner on October 3rd benefiting the Issaquah Schools Foundation.



The school year is off to a great start with the help of the following volunteers:

Bulldog Business Day: Teresa Mundel, Yang YiQing, Erich Von Hauske Nakagawa, Lisa Righetti, Melissa Yoon, Noelle Alvis, Sunshine Kragh, Yang YiQing, Amy Sparks, Carrie Haines, Heather Harris, Satyakam Satyakam, Yang YiQing, Yvette Artman

Student Schedule Handout: And Amy Sparks, Chris Edwards, Janet Bien, Jessica Mills, Nadia Ali, Sunshine Kragh, Shelly Compton, Deepa Majumder



Project Deadline: Thursday, Nov. 1, 2018 **Entries Accepted Now**

The theme for the 2018-2019 school year is: **HEROES AROUND ME.**

The Reflections Program is a National PTA and Washington State PTA cultural arts competition. The purpose of this program is to provide an opportunity for students to use their creative talents by expressing themselves through their own original works.

A student may submit an entry in any of six arts areas. Only original works of art are accepted. The six art areas are: Visual Arts, Photography, Literature, Music Composition, Dance Choreography, and Film Production.

- Visual Arts: Drawing, painting in tempera, oil, acrylic, watercolor & t-shirt paints, computer generated art, two-dimensional collage, printmaking, needlework & leather tooling. [Visual Arts 2D Rules](#) [Visual Arts 3D Rules](#)
- Literature: Works of fiction, nonfiction, poetry, prose, drama, short stories and lyrics. [Literature Rules](#)
- Music Composition: Original musical composition, with or without words. [Music Composition Rules](#)
- Photography: Color or black and white, included techniques: photogram, negative sandwich, and multiple exposure. [Photography Rules](#)
- Dance Choreography: Originally choreographed dance composition. [Dance Choreography Rules](#)
- Film Production: Original works, with or without sound, of animation, narrative, documentary, experimental or music video/film. [Film Production Rules](#)
- Special Artist Division. [Special Artist Rules](#)

Please refer to general guidelines & specific rules here: [WA State PTA Reflections page](#)

To submit an entry use this [Student Entry Form](#) or pick one up in the BLMS office.

Entries are to be submitted in the BLMS office by the due date. Please leave them in the black bag labelled “Reflections”

Theme Search Contest:

The search is on for the 2020-2021 National PTA Reflections program theme! The due date for submitting a theme search entry is November 1, 2018. The students who submits the winning entry will receive \$100. Be sure to check the [Past Themes](#) prior to submitting. Entries are to be emailed to support@wastatepta.org or mailed to the WSPTA office (1304 South Fawcett Avenue, Suite 300, Tacoma, WA 98402). [Reflections Theme Search Entry Form](#)

For any question, contact: tanu.mtr@gmail.com



**FOR YOUTH DEVELOPMENT®
FOR HEALTHY LIVING
FOR SOCIAL RESPONSIBILITY**

PARENTING WORKSHOPS

FOR PARENTS AND CAREGIVERS OF CHILDREN AFFECTED BY TRAUMA

Childhood Development: This training provides information on key areas of childhood development; social, cognitive, and physical development are all explored. The training focuses on how complex trauma affects development in infants and toddlers, school aged children, and adolescents.

By Heather Perry, Community Educator at Apple Health Core Connections

Behavioral Support Techniques: The goal of this training is to give parents, caregivers and supportive adults tools to prevent or de-escalate behavioral crises and effectively manage acute crises. Participants will learn constructive ways to handle stressful situations.

By Ivona Radunovic, Lead Behavior Specialist at the YMCA Community of Fostering

How to Better Communicate with Teens and Tweens: Learn new skills on active listening, and understand its benefits. Understand how our bodies demonstrate if we are engaged and really hearing kids. Learn to set the environment for positive interactions and communication.

By Kathy Bigelow, Foster Home Developer and Trainer at the YMCA Community of Fostering

Substance Use, Abuse & Addiction: Explores the impact and rates of substance use among youth in foster care. It discusses risk factors and protective factors, how substance use effects the brain, different types of substances being used, and common warning signs of use or addiction. Caregivers will leave better able to start conversations with youth on substance use and addiction.

By Lindsey Greene, Community Educator at Apple Health Core Connections

Whole Brained Parenting: Whole Brain Parenting introduces participants to the functions of the brain, the effects of the brain's mirror neurons, and how the brain hemispheres' impact specific behaviors. This training uses the teachings of Dan Siegel, MD, and pairs great with Trauma Informed Care.

By Heather Perry, Community Educator at Apple Health Core Connections

Conflict, Come on I'm Ready: What kind of "conflict responder" are you? Conflicts can build relationships! Learn ways to approach conflict and feel like you both win! Develop skills and a style where conflict can be rewarding.

By Kathy Bigelow, Foster Home Developer and Trainer at the YMCA Community of Fostering

To register, please e-mail parented@seattleyymca.org

Children's activities provided during workshops.

ACCELERATOR YMCA
909 4th Avenue, Seattle, WA 98104
P 206 382 5000 seattleyymca.org

Everyone is welcome. The YMCA of Greater Seattle strengthens communities in King and south Snohomish counties through youth development, healthy living and social responsibility. **Financial assistance is available.**

Session 1: Childhood Development

September 22nd, 2018
10 to 12 @ Coal Creek Y

Session 2: Behavioral Support Techniques

October 6th, 2018
10 to 12 @ Meredith Matthews Y

Session 3: How to Better Communicate with Teens and Tweens

October 20th, 2018
10 to 12 @ Auburn Y

Session 4: Substance Use, Abuse & Addiction

November 10th, 2018
10 to 12 @ Matt Griffin Y

Session 5: Behavioral Support Techniques

November 17th, 2018
10 to 12 @ Auburn Y

Session 6: Whole Brained Parenting

December 1st, 2018
10 to 12 @ West Seattle Y

Session 7: Conflict, Come on I'm Ready

December 8th, 2018
10 to 12 @ Dale Turner Y



The Issaquah School District does not sponsor, endorse, or recommend any of the organizations, services, or activities described in these materials. In consideration for the privilege to distribute these materials, ISD shall be held harmless from any causes of action filed in any court or administrative tribunal arising out of the distribution of these materials, including all costs, attorney's fees, judgments, or awards.



CITY OF
ISSAQUAH
PARKS & RECREATION



TEEN ART CLUB

FALL FOCUS: MANGA



Learn a variety of techniques using color pencil, charcoal, chalk pastels and more! This Fall, each class will be focused on Manga style cartooning and comics.

Mondays, September 24 - December 3
4:00 - 5:30 p.m.

Issaquah Community Center

Cost: \$24 Residents, \$30 Non-Residents

Ages: 11-16



To register, contact 425-837-3300
or register online and reference
barcode #62235

Questions? Contact Lisa Echert
at 425-837-3308 or
lisae@issaquahwa.gov

The Issaquah School District does not sponsor, endorse, or recommend any of the organizations, services, or activities described in these materials. In consideration for the privilege to distribute these materials, ISD shall be held harmless from any causes of action filed in any court or administrative tribunal arising out of the distribution of these materials, including all costs, attorney's fees, judgments, or awards.

REVOLUTION DANCE FACTORY



REGISTER NOW
FALL DANCE CLASSES
SEPT. 4TH – DEC. 16TH

Contact us NOW for a FREE TRIAL CLASS

Admin@RevolutionDanceFactory.com

www.RevolutionDanceFactory.com

Check out our website for class Schedule and Pricing.



Parent-Tot
Classes for ages
18 months- 2.5 yrs

**Creative
Movement**
Classes for ages
2.5 – 4 years

Combo Classes
for ages 5-6
(Ballet, Tap, Jazz)

For Ages 7 – 18
Ballet, Tap, Jazz,
Hip Hop,
Contemporary,
Lyrical and
Acrobatics

**REVOLUTION
DANCE FACTORY**

660 NW Gilman Blvd C2
Issaquah, WA 98027

The Issaquah School District does not sponsor, endorse, or recommend any of the organizations, services, or activities described in these materials. In consideration for the privilege to distribute these materials, ISD shall be held harmless from any causes of action filed in any court or administrative tribunal arising out of the distribution of these materials, including all costs, attorney's fees, judgments, or awards.



Largest
2 Day Festival
in the State

CARNIVAL



**ISSAQUAH
VALLEY
ELEMENTARY
555 NW HOLLY**

FRI. OCT. 5TH 4 – 9
SAT. OCT 6TH 10 – 9
SUN OCT 7TH 10 – 9

Tickets on Sale at: www.SalmonDays.Org
 PROCEEDS BENEFIT
 ISSAQUAH VALLEY PTA & ISSAQUAH CHAMBER



Volunteer!



BE PART OF THE FUN

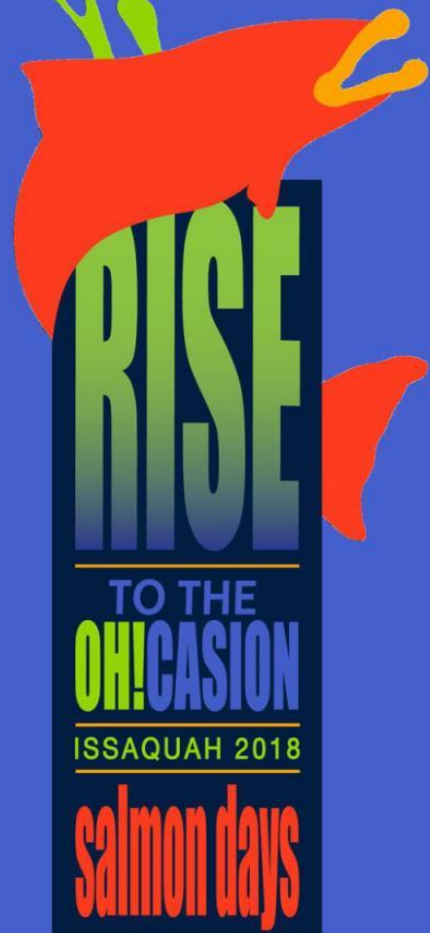
SAT. OCT. 6 & SUN. OCT. 7
10am – 6pm
Olde Town Issaquah

Sign up today!

WWW.SALMONDAYS.ORG



- Grande Parade
- Retail
- Field of Fun
- X-Stream Team
- Shuttle
- Booth Sitter
- Info Booth



©2018 GREATER ISSAQUAH CHAMBER OF COMMERCE



THE GREATER
ISSAQUAH
CHAMBER OF COMMERCE

anthology



Seattle Children's
HOSPITAL • RESEARCH • FOUNDATION



ISSAQUAH
COMMISSION

Allegro
PHARMACY

aetna

Fred Meyer



First Tech
federal credit union

Reporter

arena
SPORTS

98.9
THE BULL

MOVIN
92.5



CITY OF
ISSAQUAH
WASHINGTON

Recology
CleanScapes
WASTE ZERO

AM 880
K-FX 1

SNOQUALMIE
CASINO

OVERLAKE MEDICAL CENTER
& CLINICS

The Issaquah School District does not sponsor, endorse, or recommend any of the organizations, services, or activities described in these materials. In consideration for the privilege to distribute these materials, ISD shall be held harmless from any causes of action filed in any court or administrative tribunal arising out of the distribution of these materials, including all costs, attorney's fees, judgments, or awards.

TEEN TRIPS
Flying Circus
EXTREME AIR SPORTS PARK

Take advantage of the no school day and jump with friends at the world's largest extreme air sports park located in Tukwila!

Monday, October 8

11:00 a.m. - 3:00 p.m.

Meet at the Issaquah Community Center

\$25 Residents, \$30 Non-Residents

Grades 6-8

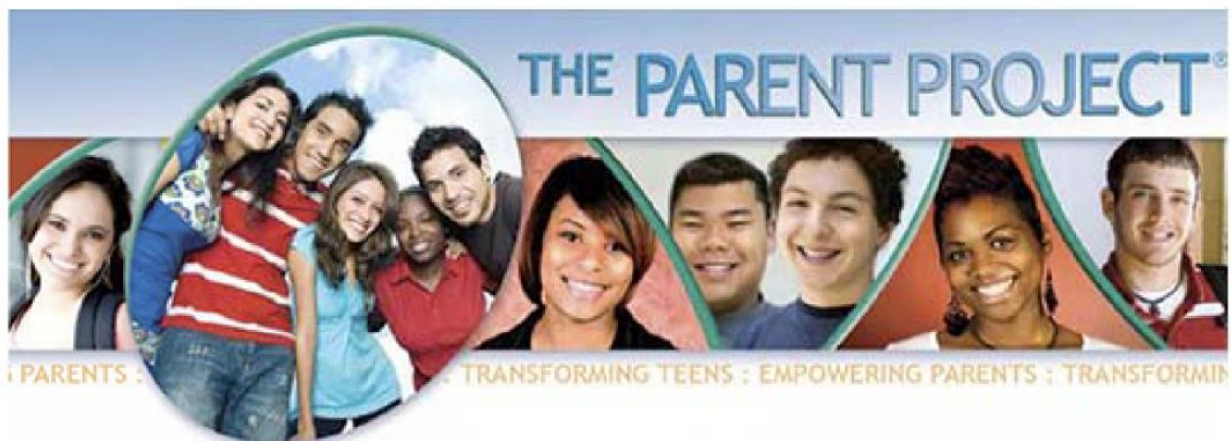


To register, contact 425-837-3300
or register online and reference
barcode #62238

Questions? Contact Lisa Echert
at 425-837-3308 or
lisa@issaquahwa.gov



The Issaquah School District does not sponsor, endorse, or recommend any of the organizations, services, or activities described in these materials. In consideration for the privilege to distribute these materials, ISD shall be held harmless from any causes of action filed in any court or administrative tribunal arising out of the distribution of these materials, including all costs, attorney's fees, judgments, or awards.



Broken window:	\$100.00
Time off work to meet with the principal:	\$300.00
Counseling:	\$1,000.00
Parent Project® solutions:	Priceless!



Empowering Parents. Transforming Teens.

- Learn how to never argue with your child again!
- Prevent or intervene in alcohol or drug use!
- Improve school attendance and performance!

The Issaquah Police Department is hosting a ten week course starting October 9th. For more information and to register, visit the website below:

www.IssaquahWA.gov/ParentProject

CONFIDENCE-BUILDING WORKSHOP



Started by Olympic and NCAA athletes, ZGiRLS is a nonprofit organization dedicated to elevating and equipping girls with tools to help them build mental resilience and confidence.



Wednesday, October 10th (or)
Wednesday, October 24th

TIME: 6:30 - 8:00 p.m.

LOCATION: Issaquah Community Center

COST: \$24; \$20 for Residents

AGES: 11-14

WHAT TO EXPECT:

- Led by strong female athlete ZGiRLS Mentors
- Confidence-building games, activities, and fun!
- Every girl will leave feeling inspired, confident, & empowered!



To register, contact 425-837-3300 or register online and reference barcode #61986 (Oct. 10) or #61987 (Oct. 24)



CITY OF
ISSAQUAH
PARKS & RECREATION

Questions? Contact Lisa Echert at
425-837-3308 or lisae@issaquahwa.gov

The Issaquah School District does not sponsor, endorse, or recommend any of the organizations, services, or activities described in these materials. In consideration for the privilege to distribute these materials, ISD shall be held harmless from any causes of action filed in any court or administrative tribunal arising out of the distribution of these materials, including all costs, attorney's fees, judgments, or awards.



F.L.A.S.H PARENT PRESENTATION

Each year the Issaquah School District offers presentations of the Family Life and Sexual Health (F.L.A.S.H) curriculum for parents/guardians of secondary students.

THE PRESENTATION INCLUDES:

- Laws and District procedures
- Curriculum presentation in our classrooms
- Options for exempting students

THIS PRESENTATION IS FOR:

Parents of all Issaquah Middle School and High School Students

DATES AND LOCATION:

Thursday, October 25th, 6:00 PM

Issaquah Valley Elementary
Multi-Purpose Room
555 NW Holly
Issaquah WA, 98027

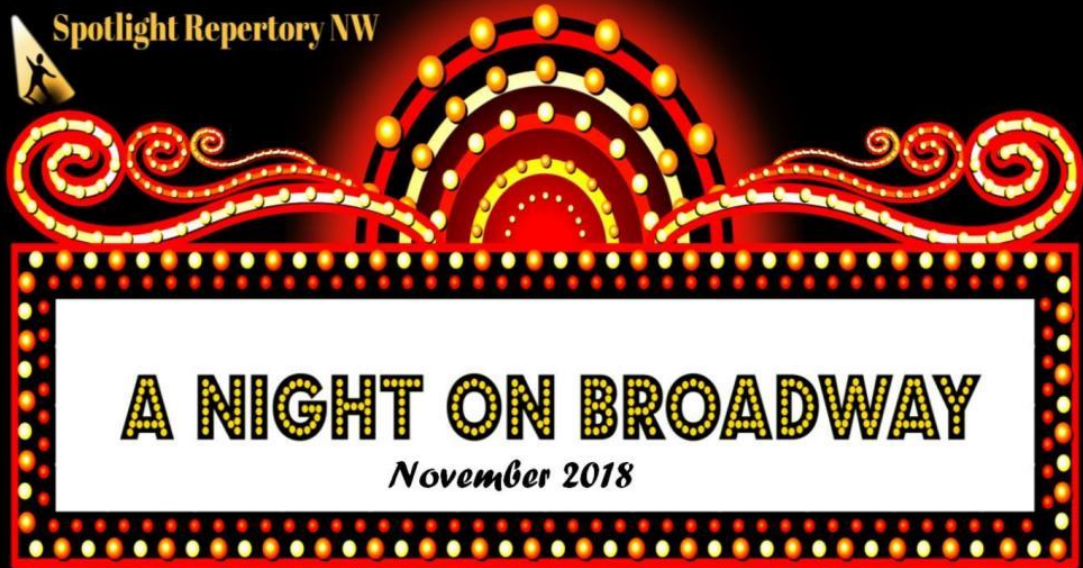
Saturday, October 27th, 9:00 AM

Issaquah School District Administration Center
565 NW Holly St.
Issaquah, WA, 98027

CONTACT INFORMATION

Kris Coleman
Health and Fitness Support Specialist
colemank@issaquah.wednet.edu
(425) 837-7123

Spotlight Repertory NW



A NIGHT ON BROADWAY

November 2018

Musical Theater Programs

Grades 2nd-10th

Register now!

SpotlightRepNW.org



improv class

Youth and Adult Classes

Register now!

SpotlightRepNW.org



**Audition for ENCORE,
Spotlight Rep's new vocal ensemble!**

Ladies age 16 to adult!

SpotlightRepNW.org

The Issaquah School District does not sponsor, endorse, or recommend any of the organizations, services, or activities described in these materials. In consideration for the privilege to distribute these materials, ISD shall be held harmless from any causes of action filed in any court or administrative tribunal arising out of the distribution of these materials, including all costs, attorney's fees, judgments, or awards.



Financial Planning for your Child with a Developmental Disability

Please join LEO for an open Forum on Special Needs Trusts, Endowment Trusts and Financial Planning for individuals with Developmental Disabilities.

Jane Searing will facilitate this Forum. Jane is a LEO Board Advisor, CPA, Master of Science in Taxation (MST), and Clark Nuber Shareholder.

This Forum is a free non-sales event. Space is limited, so please [Register Here](#). Or visit the LEO website.

FORUM DETAILS

DATE : November 29, 2018 - Thursday
TIME: 6:00 - 7:30 PM
LOCATION: Sammamish Community YMCA
Community Meeting Room
831 228th Ave SE
Sammamish, WA 98075



LEO is a community based non-profit that supports individuals with developmental disabilities

Note: The YMCA and School District neither sponsor nor endorse this event and assume no responsibility for it.

The Issaquah School District does not sponsor, endorse, or recommend any of the organizations, services, or activities described in these materials. In consideration for the privilege to distribute these materials, ISD shall be held harmless from any causes of action filed in any court or administrative tribunal arising out of the distribution of these materials, including all costs, attorney's fees, judgments, or awards.



RAISE THE BAR

*An Academic Approach as
Unique as Each Student*

PRIVATE TUTORING

TEST PREPARATION

LANGUAGE ARTS

SOCIAL STUDIES

ALL GRADE LEVELS



Students and parents alike agree Cynthia Johnson's patient and caring teaching techniques build self-confidence!

"Cynthia was instrumental in helping our son develop successful study habits and gain the confidence to excel in school." - Proud Parent of Jen

Whether your child needs to catch up, keep up, or be enriched, Cynthia Johnson works to tailor sessions to each student.

With more than 18 years of educational experience—Cynthia is ready to help your student excel at school and succeed in life. Cynthia specializes in teaching all types of children, from AP students to students with learning and cognitive differences, such as ADHD, Dyslexia, and autism.

LANGUAGE ARTS	WRITING	STUDY SKILLS	PSAT
READING	SOCIAL STUDIES	SOCIAL SKILLS	SAT
SPELLING	HISTORY	ACT	



(425) 417-7984

www.cjohnsontutoring.com

SIGN-UP TODAY!

The Issaquah School District does not sponsor, endorse, or recommend any of the organizations, services, or activities described in these materials. In consideration for the privilege to distribute these materials, ISD shall be held harmless from any causes of action filed in any court or administrative tribunal arising out of the distribution of these materials, including all costs, attorney's fees, judgments, or awards.

The Issaquah School District does not sponsor, endorse, or recommend any of the organizations, services, or activities described in these materials. In consideration for the privilege to distribute these materials, ISD shall be held harmless from any causes of action filed in any court or administrative tribunal arising out of the distribution of these materials, including all costs, attorney's fees, judgments, or awards.

BACH TO ROCK

NOW ENROLLING

- ★ PRIVATE MUSIC LESSONS
- ★ GROUP AND ENSEMBLE LESSONS
- ★ ROCK BAND
- ★ B2R GLEE CLUB
- ★ EARLY CHILDHOOD CLASSES
- ★ BIRTHDAY PARTIES
- ★ AND MORE!

ROCK AND
CLASSICAL INSTRUMENTS

206-880-1215
redmond.bachtorock.com

Playing music
should be fun,
after all it's
called *play*
for a reason!



The Issaquah School District does not sponsor, endorse, or recommend any of the organizations, services, or activities described in these materials. In consideration for the privilege to distribute these materials, ISD shall be held harmless from any causes of action filed in any court or administrative tribunal arising out of the distribution of these materials, including all costs, attorney's fees, judgments, or awards.



Early Childhood **CHILDFIND PROGRAM**

The ISD Childfind Program is designed to locate and offer assistance to infants, toddlers, preschoolers and school-age children, between the ages of birth and 21, who may have developmental delays or significant learning challenges.

The Early Childhood CHILDFIND PROGRAM Is designed to reach children from Birth to age 5 who may be eligible for special education services.



We offer Childfind Developmental Screenings monthly during the school year, from September through May.

For information on children ages 3-5 please contact:

425-837-7197

or

childfind@issaquah.wednet.edu

**For students Kindergarten age and older, please contact your school directly.*